

Stallion Rail Joiner

INSTALLATION GUIDE



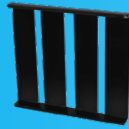
What you need:



Stallion Rail



Bending tool



Joining Buckle



1 Hold joiner so the flat side is facing the sky. Put two ends of the rail through middle opening of the joiner.



2 Use your bending tool (or hand), and fold the top section of rail away from you on both ends of rail.



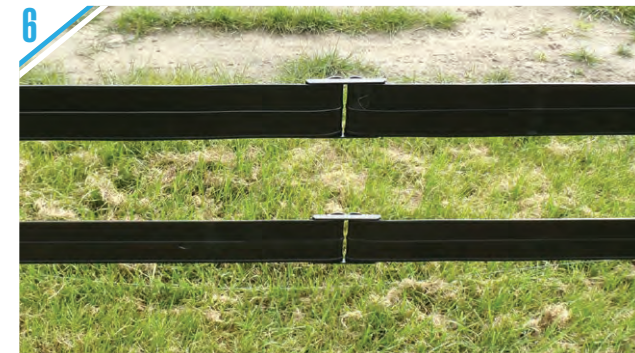
3 Remove bending tool and give end of both rails an extra bend with hands.



4 The slide tongue into outside of the joiner for both sides.



5 Push both ends of rail in as far as you can. Can also use the other side of rail to pull.



6 Once tensioner is installed, rail will pull tight in the joiner like so.

Need more attachments or installation support?

duncanequine.com.au
FREE CALL 1800 259 365